

**Head Office:**  
Dixon Kelley Estate Agents  
1 Penn Court  
Station Road, West Moors  
Dorset. BH22 0JJ

# DORSET PARK HOMES

**DRAFT**

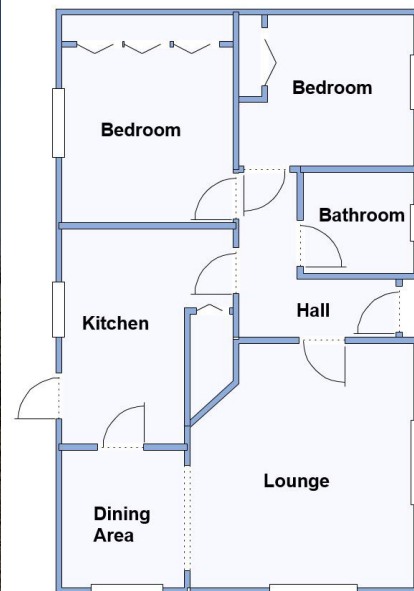
[www.dorsetparkhomes.com](http://www.dorsetparkhomes.com)

**Telephone: 01202 877511**

**7 Dewlands Park, West Close, Verwood, Dorset. BH31 6PR**



**Parking on Plot & Small Sunny Garden**



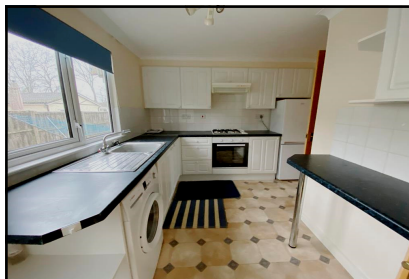
This drawing has been prepared for diagrammatic purpose only. Not to scale

## 2 Bedroom Park Home approx 32' x 20'

Accommodation & approximate room dimensions:

- Homeseeker circa 2000
- Entrance Hall : Hatch to roof space.
- Lounge/Dining Room: approx 19'3" x 13'6" overall. Feature fireplace with gas fire fitted (untested). 2 Bay window.
- Kitchen: approx 11'9" x 9'3". Range of floor and wall cupboards. Built-in oven, hob & cooker hood over (untested). Plumbing for washing machine. Space for fridge/freezer. Cupboard housing combination gas boiler. Door to garden.
- Bedroom 1: approx 11'4" x 9'3" including fitted wardrobes.
- Bedroom 2: approx 9'6" x 8'3". Fitted wardrobe.
- Bathroom: Panelled bath with mixer tap and shower attachment. Pedestal wash basin & WC.
- Gas Central Heating (system untested)
- PVCu Double-Glazing
- Parking on Plot. Garden laid to patio. Metal shed.
- Age restriction 50+. Pets Considered
- Popular, well maintained Residential Park near to local amenities & heathland walks.

## Pet Friendly Park



**Pitch Fee: approx £175.33 per month**

**Subject to Annual Review**

**Council Tax Band: 'A'**

**Tenure: 1983 Mobile Homes Act Agreement**

**Price £145,000**

**VIEWING STRICTLY BY APPOINTMENT WITH THE VENDOR'S AGENT Dorset Park Homes 01202 877511**

**IMPORTANT NOTE:** These particulars are believed to be correct but their accuracy is not guaranteed. They do not form part of any contract. Nothing in these particulars shall be deemed to be a statement that the property is in good structural condition or otherwise, nor that any of the services, appliances, equipment or facilities are in good working order or have been tested. Purchasers should satisfy themselves on such matters prior to purchase Ref.W04711

*The recommended specialist in Park Home sales*  
Proprietor: Simon Dixon

